



## TECHNICAL DATA SHEET THYSIS LOW-LINE TILE VENTILATORS

The Thysis 'Low-Line' ventilators have been designed to be both unobtrusive and practical. The 10k ventilation area is recessed within the profile, and has no sharp edges to trap leaves and any other debris significantly reducing the risk of blocked ventilation and is suitable for pitches of 17.5° and above. A Square to round pipe adapter to suit 110mm flexi-pipe is available if required.

<b>Use</b>	Permits entry of air into roof space for passive, cross flow ventilation or for use with mechanical extraction
<b>Material and colour</b>	Moulded in 'High Impact Polystyrene', UV Water based paint to match most tile profiles and finishes
<b>Product Reference</b>	Ventilation area 10,000mm <sup>2</sup>
<b>Authority</b>	Comply fully with the requirements of NHBC, BS 5250 and BR Document C

***Thysis roof ventilation products comply with all current British Standard requirements and NHBC regulations***

### Technical Data

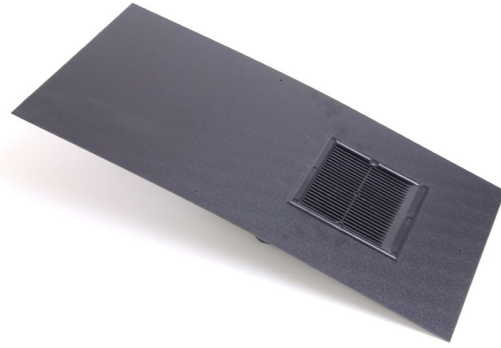
#### LLV

Spacing centers required to achieve a ventilation area of:

5000mm<sup>2</sup>/m - Install at 2.0m centres  
10000mm<sup>2</sup>/m - Install at 1.0m centres

Airflow Resistance when used as an extract terminal:

10Pa	54m <sup>3</sup> /hr	( 15 litres/sec)
42Pa	108m <sup>3</sup> /hr	( 30 litres/sec)
162Pa	216m <sup>3</sup> /hr`	( 60 litres/sec)



## TECHNICAL DATA SHEET THYSIS SLPS LOW-LINE SLATE VENTILATORS

**SLPS 10-1 Slate Low-Line Ventilator (500 x 250mm) Pin Seal**

**SLPS 10-2 Slate Low-Line Ventilator (600 x 300mm) Pin Seal**

The Thysis 'Low-Line' ventilators have been designed to be both unobtrusive and practical. The 10k ventilation area is virtually flat with the sheet, and has no sharp edges to trap leaves and any other debris significantly reducing the risk of blocked ventilation. Incorporating a 4mm fly-screen protection and is suitable for pitches of 17.5° and above. A pipe adaptor is available if required.

<b>Use</b>	Permits entry of air into roof space for passive, cross flow ventilation or for use with mechanical extraction
<b>Material and colour</b>	UV Stable HIPS sheet with a 'Pin-Seal' finish
<b>Product Reference</b>	SLPS: Ventilation area 10,000mm <sup>2</sup> STR110: Square to Round pipe adaptor to suit 110mm flexi-pipe
<b>Authority</b>	Comply fully with the requirements of NHBC, BS 5250 and BR Document C

***Thysis roof ventilation products comply with all current British Standard requirements and NHBC regulations***

### Technical Data

#### SLPS

Spacing centers required to achieve a ventilation area of:

5mm Continuous Opening – Install at 2.0m centres  
10mm Continuous Opening – Install at 1.0m centres

Airflow Resistance when used as an extract terminal:

10Pa	54m <sup>3</sup> /hr	( 15 litres/sec)
42Pa	108m <sup>3</sup> /hr	( 30 litres/sec)
162Pa	216m <sup>3</sup> /hr`	( 60 litres/sec)



## TECHNICAL DATA SHEET THYSIS SLVF LOW-LINE SLATE VENTILATORS

**SLVS 10-1 Slate Low-Line Ventilator (500 x 250mm) Riven**

**SLVS 10-2 Slate Low-Line Ventilator (600 x 300mm) Riven**

**SLVS 10-3 Slate Low-Line Ventilator (500 x 300mm) Riven**

The Thysis 'Low-Line' ventilators have been designed to be both unobtrusive and practical and for use with most manufacturers' profiles and colours. The 10k ventilation area is virtually flat with the sheet, and has no sharp edges to trap leaves and any other debris significantly reducing the risk of blocked ventilation. Incorporating a 4mm fly-screen protection and is suitable for pitches of 17.5° and above. A pipe adaptor is available if required.

**Use** Permits entry of air into roof space for passive, cross flow ventilation or for use with mechanical extraction

**Material and colour** Moulded in 'High Impact Polystyrene' using a UV Water based paint to match most slate colours and finishes

**Product Reference** SLVS 10 -1: Ventilation area \*\*\*\*\*  
SLVS 10 -2: Ventilation area  
SLVS 10 - 3: Ventilation area  
STR110: Square to round pipe adaptor to suit 110mm flexi-pipe

**Authority** Comply fully with the requirements of NHBC, BS 5250 and BR Document C

***Thysis roof ventilation products comply with all current British Standard requirements and NHBC regulations***

### Technical Data

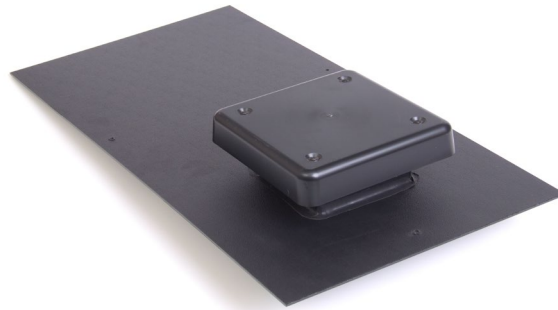
#### SLVS

Spacing centres required to achieve a ventilation area of:

5mm Continuous Opening – Install at 2.0m centres  
10mm Continuous Opening – Install at 1.0m centres

Airflow Resistance when used as an extract terminal:

10Pa	54m <sup>3</sup> /hr	( 15 litres/sec)
42Pa	108m <sup>3</sup> /hr	( 30 Litres/sec)
162Pa	216m <sup>3</sup> /hr`	( 60 Litres/sec)



## TECHNICAL DATA SHEET THYSIS SCPS RAISED COWL SLATE VENTILATORS

**SCPS 10-1 Slate Raised Cowl Ventilator (500 x 250mm) Pin Seal**

**SCPS 10-2 Slate Raised Cowl Ventilator (600 x 300mm) Pin Seal**

**SCPS 20-1 Slate Raised Cowl Ventilator (600 x 300mm) Pin Seal**

The 10k and 20k cowl type range offer unobtrusive designs, have patented 'anti-splash sleeve' devices and for use with most manufacturers. Incorporating a 4mm fly-screen protection and are suitable for pitches of 10° and above. 10k square to round adapters and flexible pipe are available for natural ventilation or mechanical extract and 20 square to round for 'passive stack' if required.

<b>Use</b>	Permits entry of air into roof space for passive, cross flow ventilation or for use with mechanical extraction
<b>Material and colour</b>	UV Stable HIPS sheet with a 'Pin-Seal' finish
<b>Product Reference</b>	SCPS: 10k ventilation area 10,000mm <sup>2</sup> SCPS: 20k ventilation area 20,000mm <sup>2</sup> STR110: Square to round pipe adapter to suit 110mm flexi-pipe
<b>Authority</b>	Comply fully with the requirements of NHBC, BS 5250, BR Document C.

***Thysis roof ventilation products comply with all current British Standard requirements and NHBC regulations***

### Technical Data

#### SCPS

Spacing centers required to achieve a ventilation area of:

- SCPS 10-1 5mm Continuous Opening – Install at 2.0m centres
- SCPS 10-1 10mm Continuous Opening – Install at 1.0m centres
- SCPS 20-1 5mm Continuous Opening – Install at 4.0m centres
- SCPS 20-1 10mm Continuous Opening – Install at 2.0m centres

Airflow Resistance when used as an extract terminal: